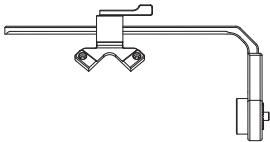


INSPIRE 2

DJI Focus Handwheel- Remote Controller Stand 手持跟焦器遥控器支架

User Guide
使用说明

V1.0 2017.01



Disclaimer and Warning

Congratulations on purchasing your new DJI™ product. The information in this document affects your safety and your legal rights and responsibilities. Read this entire document carefully to ensure proper configuration before use. Failure to read and follow instructions and warnings in this document may result in serious injury to yourself or others, damage to your DJI product, or damage to other objects in the vicinity. This document and all other collateral documents are subject to change at the sole discretion of DJI.

By using this product, you hereby signify that you have read this disclaimer and warning carefully and that you understand and agree to abide by the terms and conditions herein. You agree that you are solely responsible for your own conduct while using this product, and for any consequences thereof.

You agree to use this product only for purposes that are proper and in accordance with all applicable laws, rules, and regulations, and all terms, precautions, practices, policies and guidelines DJI has made and may make available.

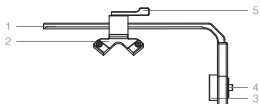
DJI accepts no liability for damage, injury or any legal responsibility incurred directly or indirectly from the use of this product. The user shall observe safe and lawful practices including, but not limited to, those set forth in this document.

Notwithstanding above, your statutory rights under applicable national legislation are not affected by this disclaimer.

DJI is a trademark of SZ DJI TECHNOLOGY CO., LTD. (abbreviated as "DJI") and its affiliated companies. Names of products, brands, etc., appearing in this document are trademarks or registered trademarks of their respective owner companies. This product and document are copyrighted by DJI with all rights reserved. No part of this product or document shall be reproduced in any form without prior written consent of or authorization from DJI.

Introduction

The DJI Focus Handwheel-Remote Controller stand makes it easier to use the aircraft Remote Controller and the DJI Focus Handwheel simultaneously. By allowing the DJI Focus Handwheel to be connected to the aircraft Remote Controller, you can fly while adjusting focus, aperture and zoom easily.

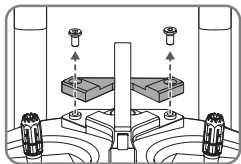


- | | |
|------------------|---------------------|
| 1. Sliding Rod | 4. Rosette Mount |
| 2. Securing Pad | 5. Securing spanner |
| 3. Securing Knob | |

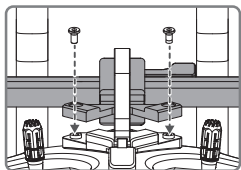
Installation

Tools Required: 1.5mm Hex Key

1. Remove the screws and the securing pad on the remote controller as shown below.



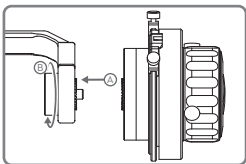
2. Align the holes on the securing pad of the DJI Focus Handwheel-Remote Controller stand with the holes on the remote controller. Insert the original screws and tighten to secure the securing pad.



- Loosen the securing spanner to adjust the rod so that it feels comfortable to you. Then return the spanner to its original position to tighten.

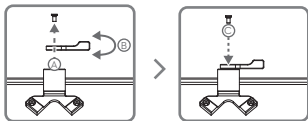


- Attach the Focus Handwheel to the rosette mount and rotate the securing knob clockwise to secure it.



Adjusting the Securing Spanner

Remove the screws on the top of the securing spanner to adjust its position if the securing spanner is hard to tighten, insert screws and tighten after adjustment.



Put the screws in the correct places during installation and removal.

Specifications

Weight: 143.56 g

免责声明

感谢您购买 DJI™ 产品。本文所提及的内容关系到您的安全以及合法权益与责任。使用本产品之前，请仔细阅读本文以确保已对产品进行正确的设置。不遵循和不按照本文的说明与警告来操作可能会给您和周围的人带来伤害，损坏本产品或其它周围的物品。本文档及本产品所有相关的文档最终解释权归大疆™ 创新（DJI）所有。如有更新，恕不另行通知。请访问 www.dji.com 官方网站以获取最新的产品信息。

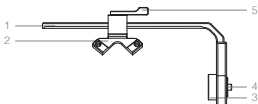
一旦使用本产品，即视为您已经仔细阅读本免责声明与警告，理解、认可和接受本声明全部条款和内容。您承诺对使用本产品以及可能带来的后果负全部责任。您承诺仅出于正当目的使用本产品，并且同意本条款以及大疆创新（DJI）制定的任何相关条例、政策和指引。大疆创新（DJI）对于直接或间接使用本产品而造成的损坏、伤害以及任何法律责任不予负责。用户应遵循包括但不限于本文提及的所有安全指引。

即使存在上述规定，消费者权益依然受当地法律法规所保障，并不受本免责声明影响。

DJI 是深圳市大疆创新科技有限公司及其关联公司的商标。本文出现的产品名称、品牌等，均为其所属公司的商标或注册商标。本产品及手册为大疆创新版权所有。未经许可，不得以任何形式复制翻印。

简介

手持跟焦器遥控器支架用于将 DJI Focus 手持跟焦器固定于飞行器遥控器上。轻松实现在控制飞行器飞行的过程中，随时调节相机镜头对焦、光圈及变焦。

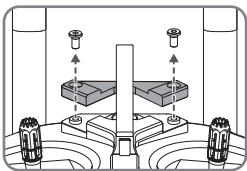


- | | |
|---------|---------|
| 1. 水平杆 | 4. 盘齿接口 |
| 2. 固定模块 | 5. 固定扳手 |
| 3. 锁紧旋钮 | |

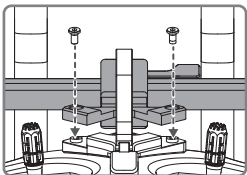
安 装

自备工具：1.5mm 内六角扳手

1. 松开遥控器移动设备支架固定模块上的螺丝，并取下该模块。



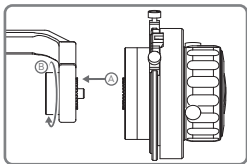
2. 将支架固定模块上的螺丝孔与遥控器上的螺丝孔对齐，并用之前卸下的螺丝拧紧固定。



3. 松开固定扳手以拉动水平杆，调整完毕后锁紧固定扳手。

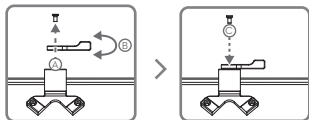


4. 将 DJI Focus 手持跟焦器安装至支架的盘齿接口，顺时针旋转锁紧旋钮进行固定。



调节固定扳手

若支架上固定扳手较松，请卸下支架顶部螺丝并调整固定扳手位置，调整完毕后再将螺丝拧紧进行固定。



安装过程中请注意保管好卸下的螺丝，以免丢失。

参数

重量：143.56 g

DJI Support
技术支持

<http://www.dji.com/support>



If you have any questions about this document, please contact DJI by sending a message to **DocSupport@dji.com**.

如果您对说明书有任何疑问或建议，请通过以下电子邮箱联系我们：**DocSupport@dji.com**。

INSPIRE is a trademark of DJI.
Copyright © 2017 DJI All Rights Reserved.

Printed in China.

中国印制